

Mary Ella Price

When Mary Ella Price was born on May 17, 1856, in Bakersville, New Jersey, (Now Northfield) her father, John, was 30, and her mother, Elizabeth, was 26. She married Lewis E Somers on May 28, 1879, in Philadelphia, Pennsylvania. They had one child, Edmond Lewis Somers, during their marriage. She died on May 1, 1944, in Linwood, NJ, at the age of 87, and was buried in Central Church Cemetery, Linwood, New Jersey.



Lewis E. and Mary Ella Somers on a 1940's Memorial Day. Lewis Somers was the first local rural mail carrier, delivering mail on horseback to parts of Egg Harbor Township

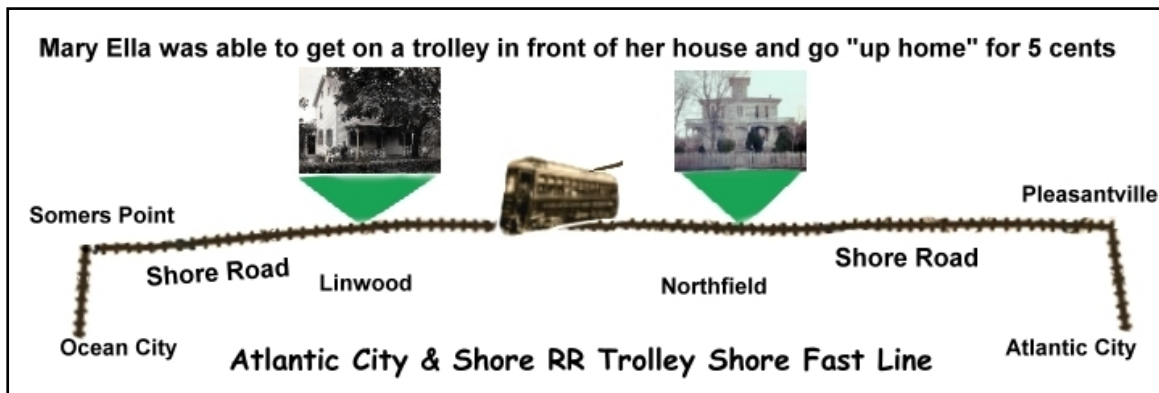
Lewis E. Somers

Lewis Edmond Somers was born on January 14, 1855, in New Jersey, his father, Lewis S, was 30 and his mother, Hannah Frambes, was 27. His father died later in 1855.

Lewis was raised by his uncle Richard Smith and his mother. He married Mary Ella Price on May 28, 1879, in Philadelphia, Pennsylvania. He had one son, Edmond Lewis, with Mary Ella Price in 1883.

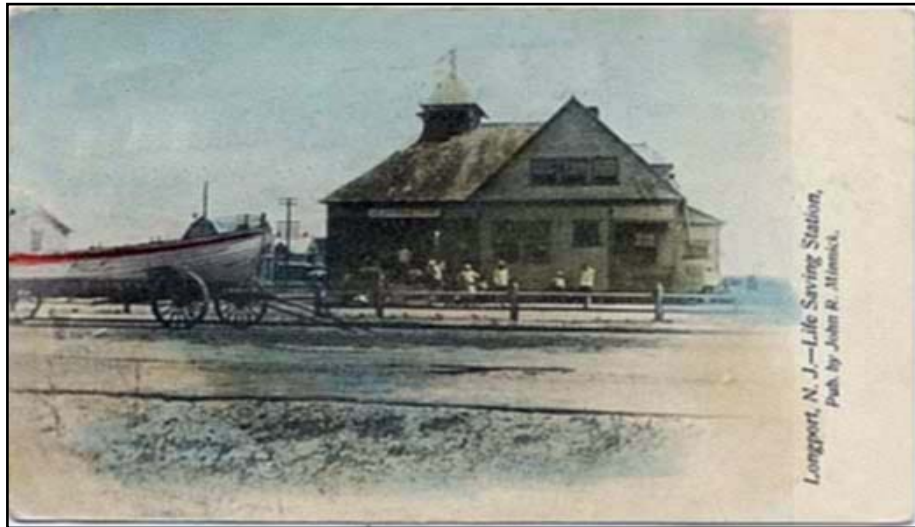
He died on September 24, 1944, at the age of 89, and was buried in Central Church Cemetery, Linwood, New Jersey.

He served with US Life-Saving Service, Great Egg, New Jersey, USA Year: 1897.





Home of Lewis and Mary Ella Somers, 1721 Shore Road, Linwood, NJ. From Left, Mary Ella, grandchildren Paul and Edmond, and Lewis E Somers.



Life-Saving Station – Longport, NJ, where Lewis Somers was assigned.

288 TREASURY DEPARTMENT. Great Egg, New Jersey, USA [JULY Year:1897

Life-Saving Service at Large.

Name and office	Whence appointed.			Where employed.	Compen- sation.
	State.	County.	Cong. dist.		
Mulford M. Townse	do	do	2d	do	p. m. 60 00
Aaron B. Steelman	do	do	2d	Great Egg, N. J.	p. m. 60 00
Alonzo Robinson	do	do	2d	do	p. m. 60 00
Mark C. Kears	do	do	2d	do	p. m. 60 00
Lewis E. Somers	do	do	2d	do	p. m. 60 00
Charles Turner	do	do	2d	do	p. m. 60 00